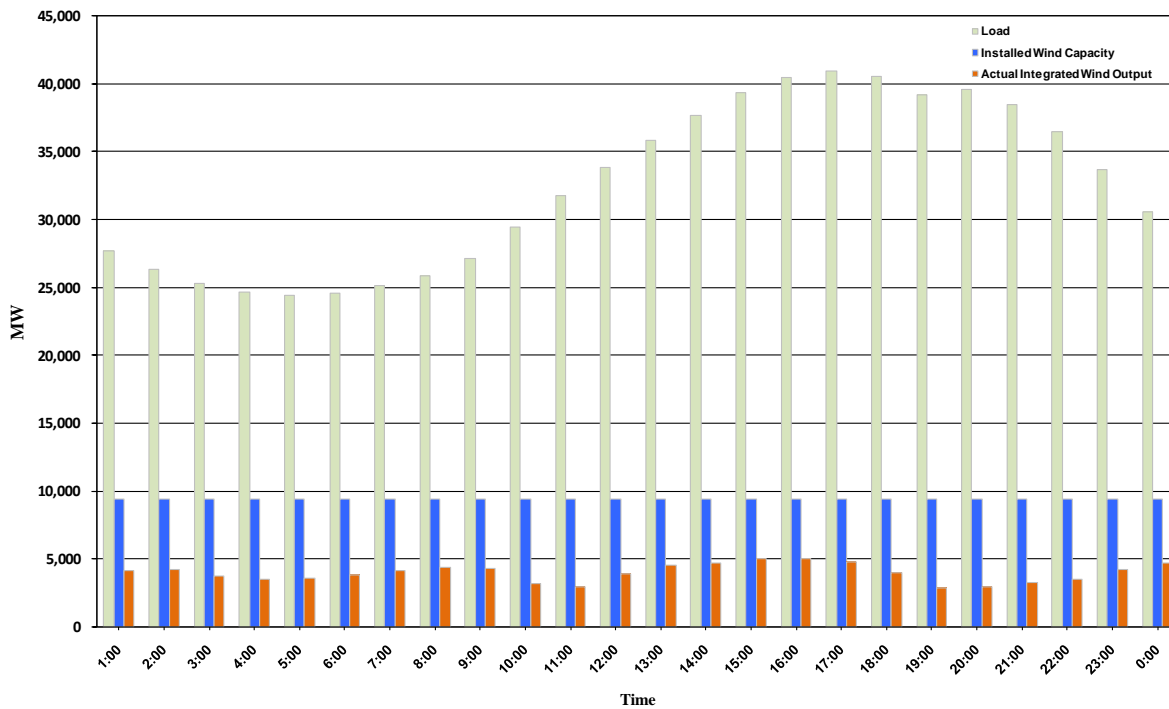




ERCOT Grid Operations Wind Integration Report: 10/24/10

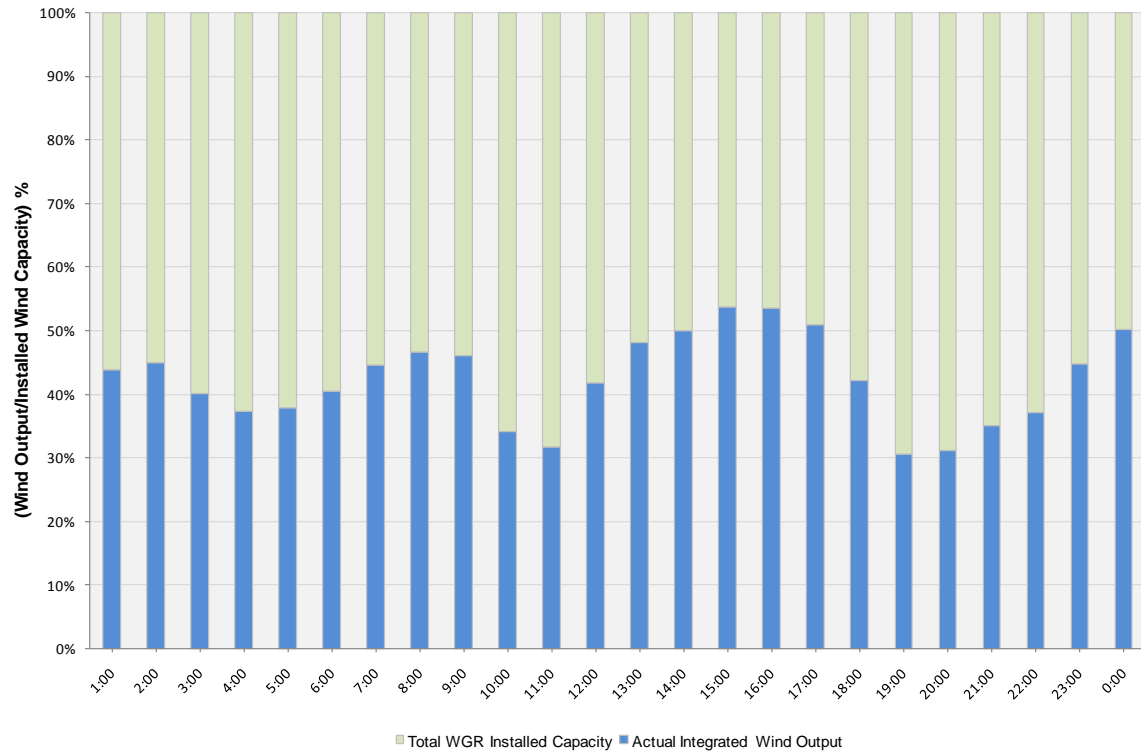
Peak Load	40,953 MW
Load Peak Hour	17
Wind Record 06/12/10	7016 MW
Max Wind value	5468 MW
Wind Peak Hour	13:56:44
Wind Integration %	14.15

Hourly Average Actual Load vs. Actual Wind Output
10-24-2010

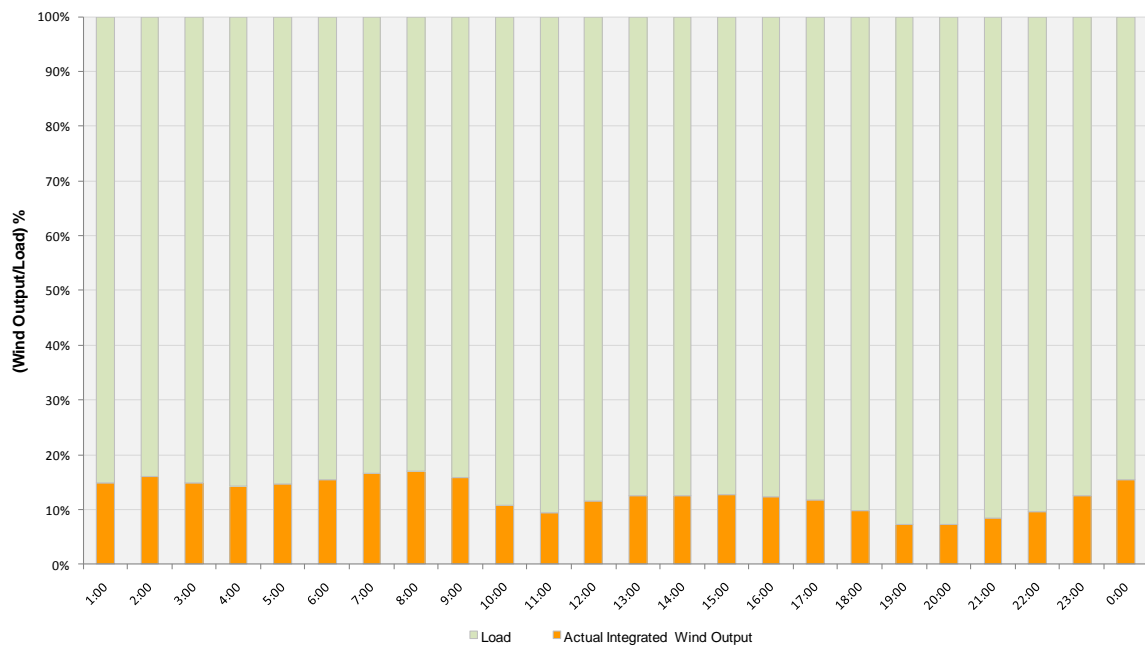




Actual Wind Output as a Percentage of the Total Installed Wind Capacity
10-24-2010



Actual Wind Output as a Percentage of the ERCOT Load
10-24-2010





ERCOT Load vs. Actual Wind Output 10/17/10 - 10/24/10

